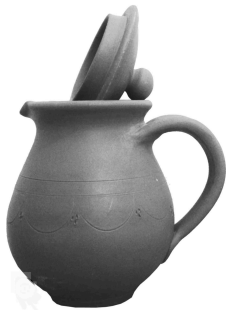


## Worksheet

- Convert °C into °F
  - 20°C
  - 80°C
  - 100°C
- Convert °F into °C
  - 56°F
  - 103°F
  - 180°F
- Convert °F into K
  - 7°F
  - 10°F
  - 15°F
- Convert K into °F
  - 25 K
  - 30 K
  - 50 K
- How is solar energy converted into heat energy in the case of living organisms?
- The photo given below resembles which type of plant. Name it and also write its mode of nutrition.



- From the photo given below
  - Identify A and B
  - Write 2 differences of it.

